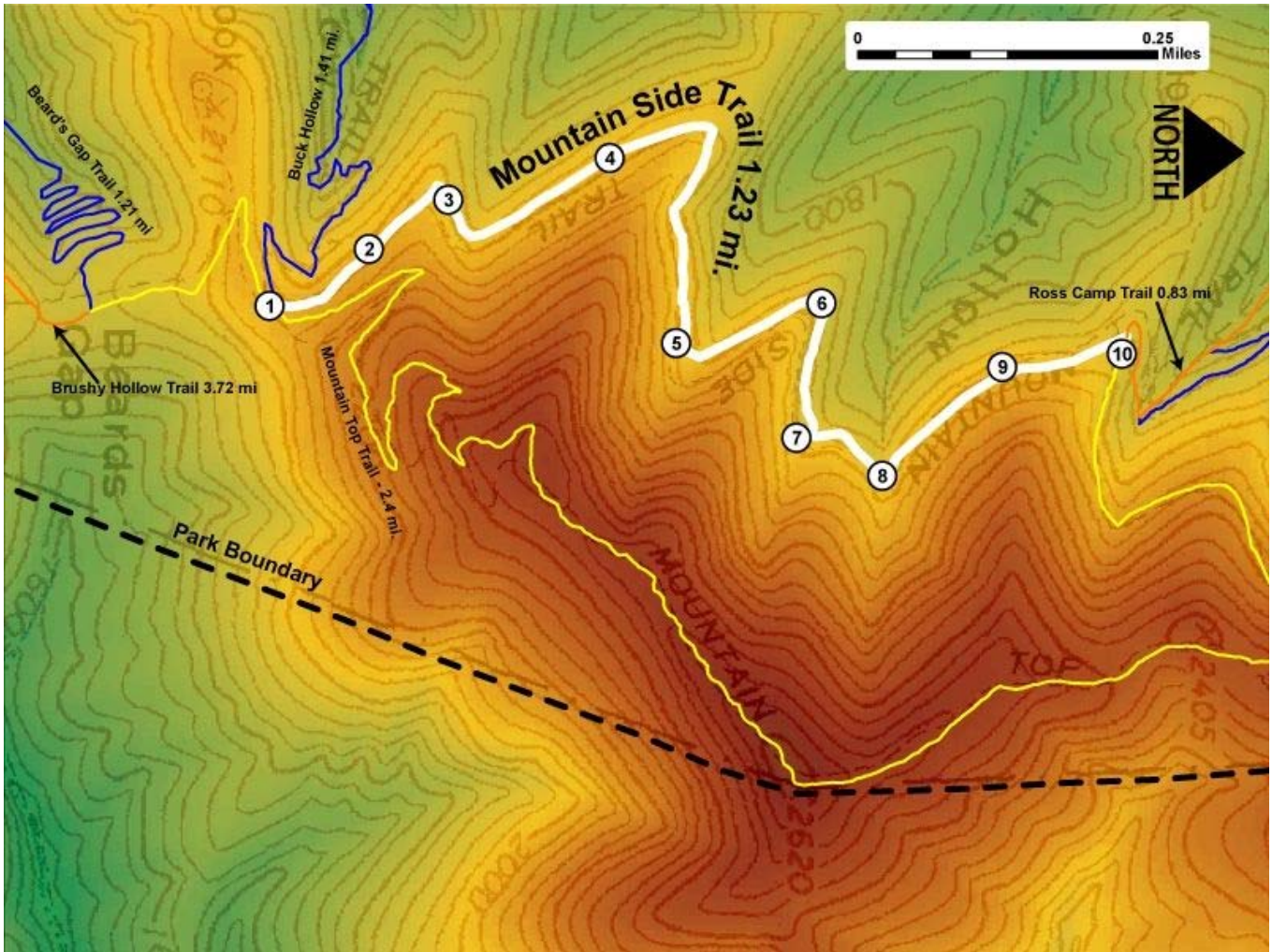


Printed from VirginiaOutdoors.net
Douthat State Park
Mountain Side Trail Map - Blaze Color: White



1. GPS: Lat. 37° 53.976, Lon. -79° 47.209
 Mountain Side Trailhead (South) - Intersection with Buck Hollow and Mountain Top Trails – Use Caution as this trail is narrow with steep drop-offs!
2. GPS: Lat. 37° 54.047, Lon. -79° 47.259
 On Trail
3. GPS: Lat. 37° 54.105, Lon. -79° 47.308
 On Trail
4. GPS: Lat. 37° 54.222, Lon. -79° 47.348
 On Trail – Flat and rocky with steep drop-offs
5. GPS: Lat. 37° 54.272, Lon. -79° 47.18
 On Trail
6. GPS: Lat. 37° 54.377, Lon. -79° 47.218
 On Trail
7. GPS: Lat. 37° 54.36, Lon. -79° 47.095
 On Trail
8. GPS: Lat. 37° 54.423, Lon. -79° 47.061
 Trail crosses seasonal creek
9. GPS: Lat. 37° 54.512, Lon. -79° 47.155
 On Trail
10. GPS: Lat. 37° 54.595, Lon. -79° 47.183
 Mountain Side Trailhead (North) and intersection with Ross Camp and Mountain Top Trails

This project made possible in part by a grant from:

