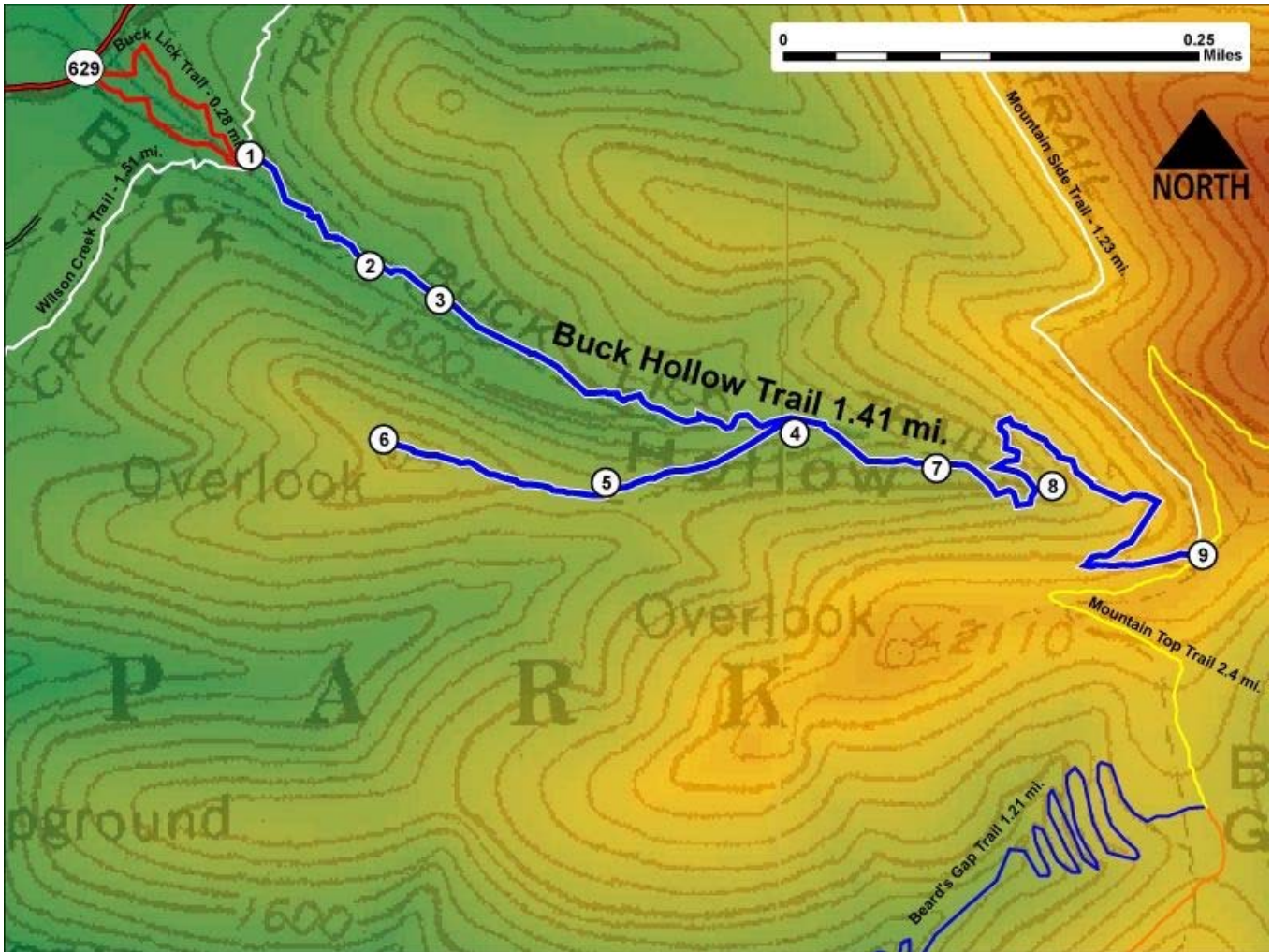


Printed from VirginiaOutdoors.net
Douthat State Park
Buck Hollow Trail Map - Blaze Color: Blue



1. GPS: Lat. 37° 54.18, Lon. -79° 47.84
Buck Hollow Trailhead (West) - Intersection with Buck Lick Interpretive Trail and Wilson Creek Trail
2. GPS: Lat. 37° 54.123, Lon. -79° 47.76
Trail fords creek
3. GPS: Lat. 37° 54.106, Lon. -79° 47.713
Trail crosses creek on stones
4. GPS: Lat. 37° 54.046, Lon. -79° 47.477
Intersection with Overlook Trail
5. GPS: Lat. 37° 54.012, Lon. -79° 47.602
On Overlook Trail
6. GPS: Lat. 37° 54.078, Lon. -79° 47.817
Overlook with views of lake
7. GPS: Lat. 37° 54.022, Lon. -79° 47.383
Trail changes elevation quickly in this section
8. GPS: Lat. 37° 54.013, Lon. -79° 47.307
Switchbacks on Trail
9. GPS: Lat. 37° 53.978, Lon. -79° 47.207
Buck Hollow Trailhead (East) – Intersection with Mountain Top Trail

This project made possible in part by a grant from:

