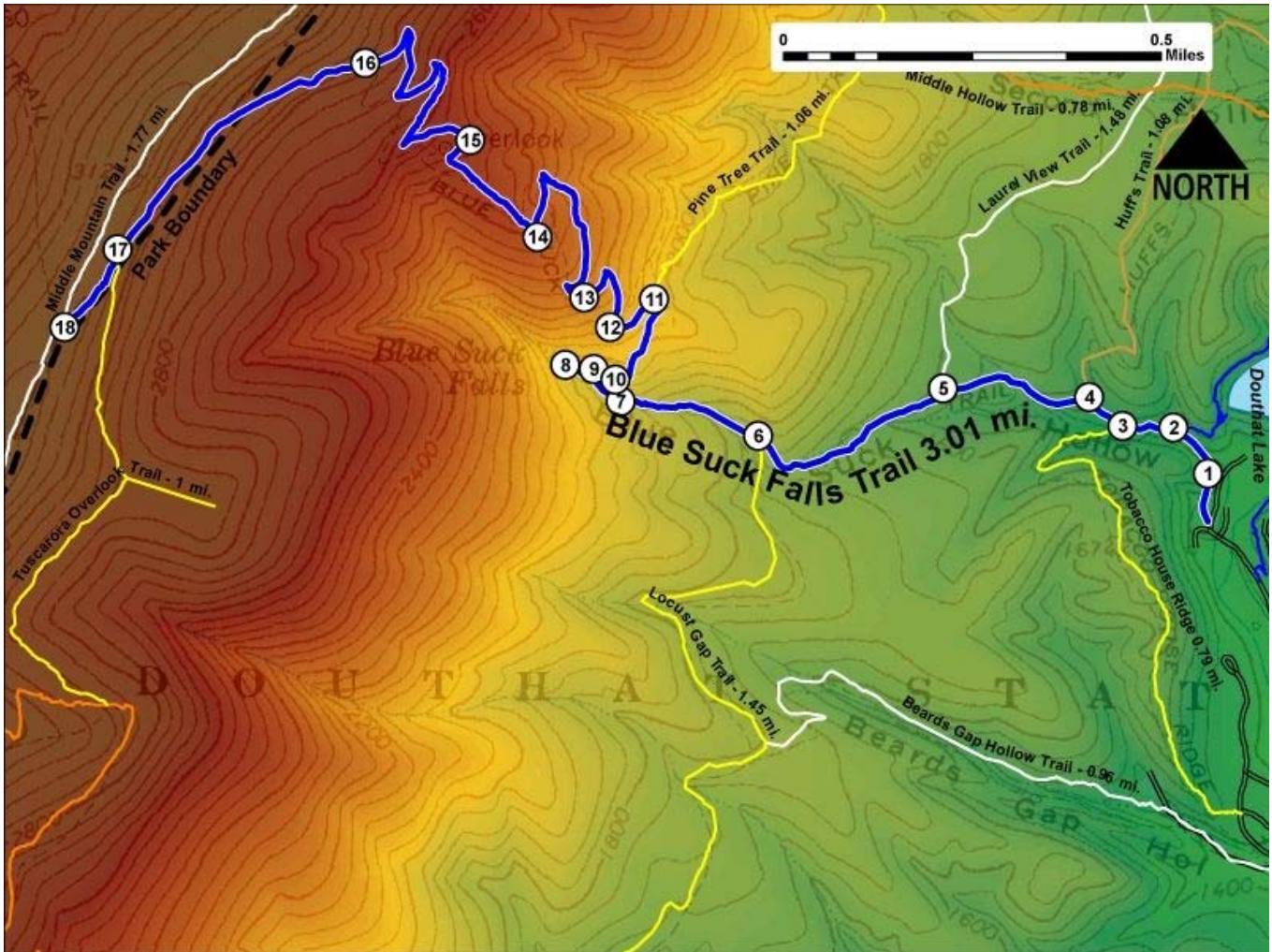


Printed from VirginiaOutdoors.net
Douthat State Park
Blue Suck Falls Trail Map - Blaze Color: Blue



1. GPS: Lat. 37° 54.157, Lon. -79° 48.315
Blue Suck Falls Trailhead (East) – Near Discovery Center
2. GPS: Lat. 37° 54.209, Lon. -79° 48.366
Heron Run Trailhead (South) – Intersection with Blue Suck Falls Trail
3. GPS: Lat. 37° 54.21, Lon. -79° 48.44
Tobacco House Ridge Trailhead (North) – Intersection with Blue Suck Falls Trail
4. GPS: Lat. 37° 54.242, Lon. -79° 48.489
Huff's Trailhead (South) – Intersection with Blue Suck Falls Trail
5. GPS: Lat. 37° 54.25, Lon. -79° 48.702
Laurel View Trailhead (South) – Intersection with Blue Suck Falls Trail
6. GPS: Lat. 37° 54.193, Lon. -79° 48.969
Locust Gap Trailhead (North) – Intersection with Blue Suck Falls Trail
7. GPS: Lat. 37° 54.23, Lon. -79° 49.17
Trail crosses creek several times on stones
8. GPS: Lat. 37° 54.271, Lon. -79° 49.232
Trail crosses creek below falls
9. GPS: Lat. 37° 54.267, Lon. -79° 49.21
On Trail – This portion has rope handhold
10. GPS: Lat. 37° 54.255, Lon. -79° 49.178
Fork in trail allows for bypass of steeper portion near falls
11. GPS: Lat. 37° 54.348, Lon. -79° 49.123
Pine Tree Trailhead (South) – Intersection with Blue Suck Falls Trail
12. GPS: Lat. 37° 54.315, Lon. -79° 49.187
On trail—switchbacks and overlooks
13. GPS: Lat. 37° 54.349, Lon. -79° 49.225
Vista Point with stone benches
14. GPS: Lat. 37° 54.418, Lon. -79° 49.294
Vista Point with stone benches

15. GPS: Lat. 37° 54.528, Lon. -79° 49.394

Interpretive Marker and Overlook

16. GPS: Lat. 37° 54.615, Lon. -79° 49.548

Top of switchbacks – Elev. 2800'

17. GPS: Lat. 37° 54.397, Lon. -79° 49.904

Tuscarora Trailhead (North) – Intersection with Blue Suck Falls Trail

18. GPS: Lat. 37° 54.317, Lon. -79° 49.98

Blue Suck Falls Trailhead (West) – Intersection with Middle Mountain Trail

This project made possible in part by a grant from:

