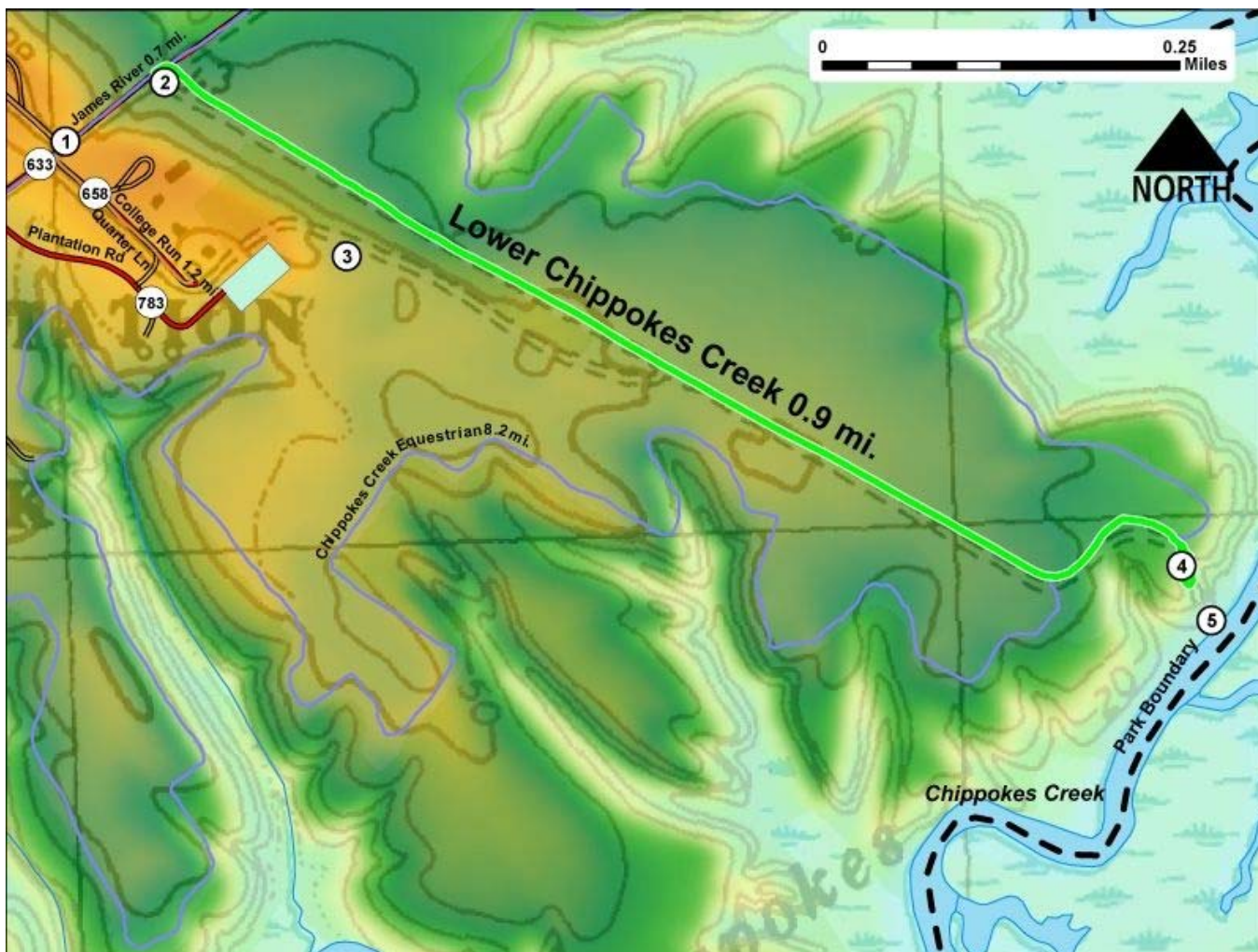


Printed from VirginiaOutdoors.net
Chippokes Plantation State Park
Lower Chippokes Creek Trail Map - Blaze Color: Green



1. GPS: Lat. 37° 8.34, Lon. 76° 43.324
James River and Lower Chippokes Creek Trailheads
2. GPS: Lat. 37° 8.375, Lon. 76° 43.248
Intersection of James River Trail and Lower Chippokes Creek Trail
3. GPS: Lat. 37° 8.267, Lon. 76° 43.112
Trail access from Mansion parking lot
4. GPS: Lat. 37° 8.069, Lon. 76° 42.481
Trail enters wooded area – Amphitheater nearby
5. GPS: Lat. 37° 8.035, Lon. 76° 42.459
Floating Dock and canoe launch with bench

This project made possible in part by a grant from:

