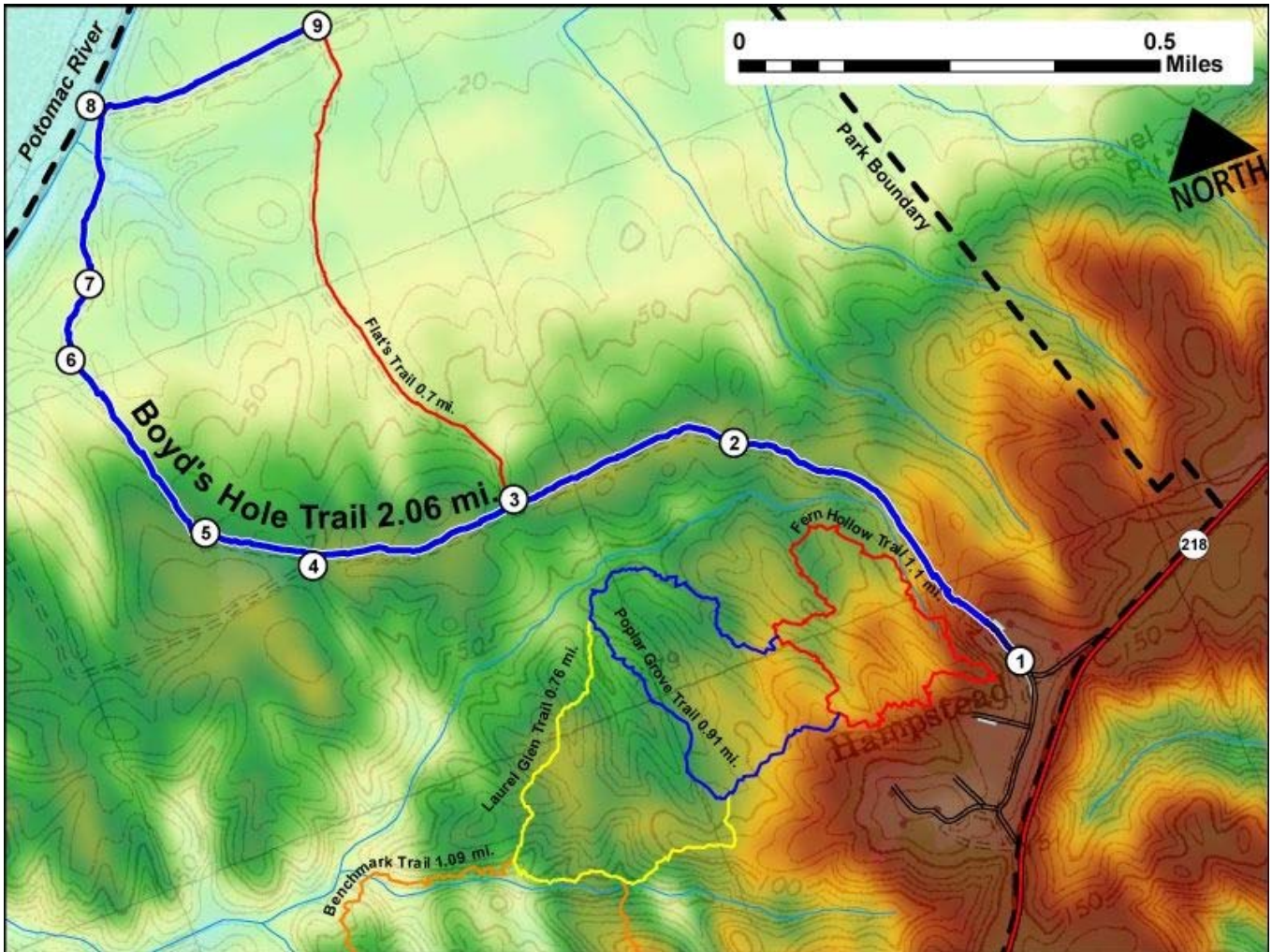


Printed from VirginiaOutdoors.net
Caledon Natural Area
Boyd's Hole Trail Map - Blaze Color: Blue



1. GPS: Lat. 38° 20.039, Lon. -77° 8.581
Boyd's Hole Trailhead (South)
2. GPS: Lat. 38° 20.356, Lon. -77° 8.831
Bench on Boyd's Hole Trail
3. GPS: Lat. 38° 20.382, Lon. -77° 9.128
Intersection with Flats Trailhead (South)
4. GPS: Lat. 38° 20.392, Lon. -77° 9.405
The Triangle – The trail continues along North side of field
5. GPS: Lat. 38° 20.463, Lon. -77° 9.522
Bench on Boyd's Hole Trail
6. GPS: Lat. 38° 20.68, Lon. -77° 9.607
Boundary of Critical Shoreline Area – Stay on Trail
7. GPS: Lat. 38° 20.747, Lon. -77° 9.548
Bench on Boyd's Hole Trail
8. GPS: Lat. 38° 20.918, Lon. -77° 9.463
Boyd's Hole Observation Deck and picnic area on bank of Potomac River
9. GPS: Lat. 38° 20.912, Lon. -77° 9.148
Boyd's Hole Trail ends at Flats Trailhead (North)

This project made possible in part by a grant from:

